

ControlPoint™ 3.0 with ControlPoint Security™



The Leading Control Suite for Display Walls

ControlPoint™ is the most fully featured display wall management suite anywhere. For more than a decade, it has been the go-to solution for thousands of the best installations around the world.

A complete, integrated and intuitive software solution for the control and management of the display wall processor, ControlPoint includes a robust client/server application, an easy-to-use drag-and-drop GUI, device

drivers, protocols, and a full API.

ControlPoint now ships with ControlPoint Security™, a NERC compliant application for managing system access and tracking system use.

ControlPoint is included with every Fusion Catalyst™ and VizionPlus II™ display wall processor.

ControlPoint™ Is Powerful

The depth of control, extensibility, and ease of use are unmatched in any other display wall product. And because ControlPoint is designed by the same Jupiter team that designs the processor hardware, its integration with every aspect of the system's features, functions, and operating system is seamless.

ControlPoint is a client/server based system. The server resides on the Fusion Catalyst or VizionPlus II processor, directly accessing hardware functionality. The client is installed on a network accessible PC running Windows XP/Vista/7. ControlPoint client and server

communicate over a TCP/IP connection using the open, clear-text ControlPoint Protocol.

ControlPoint protocol and supporting APIs can be used for custom applications and control. Simple applications using JavaScript and HTML can be generated in minutes. Using the ControlPoint API, the complete power of the Fusion Catalyst or VizionPlus II processor is available to those who want a customized interface and complete control. An RS-232 gateway is provided for devices requiring serial communication.

ControlPoint™ Defines Ease of Use

The ControlPoint Client provides a consistent user interface to start, position, size and scale application, DVI, RGB, HD and SD windows via a network client.

ControlPoint offers an object-based, drag-and-drop interface. Defined objects such as DVI, RGB, HD and SD Video inputs, Streaming Video inputs, web browsers, image viewers, and local and remote application windows can be dragged and dropped onto the display wall mimic. Setting up complex combinations of graphical and real-time data is simple, quick and intuitive.

Toolbar shortcuts to commonly used functionality are provided to make adjustments to windows even more convenient.

ControlPoint provides the ability to save the state of the display wall into a layout, stored on the display wall processor, and to quickly recall saved layouts directly from the user interface or from user-assignable hotkeys. And with all the disk space on a Fusion Catalyst or VizionPlus II display wall processor, there is room to build and store layouts for every conceivable scenario.



ControlPoint™ 3.0 with ControlPoint Security™

ControlPoint™ Delivers Airtight Security

The ControlPoint™ display wall management suite now includes ControlPoint Security™, a NERC-compliant set of security tools tightly integrated with Jupiter hardware and software.

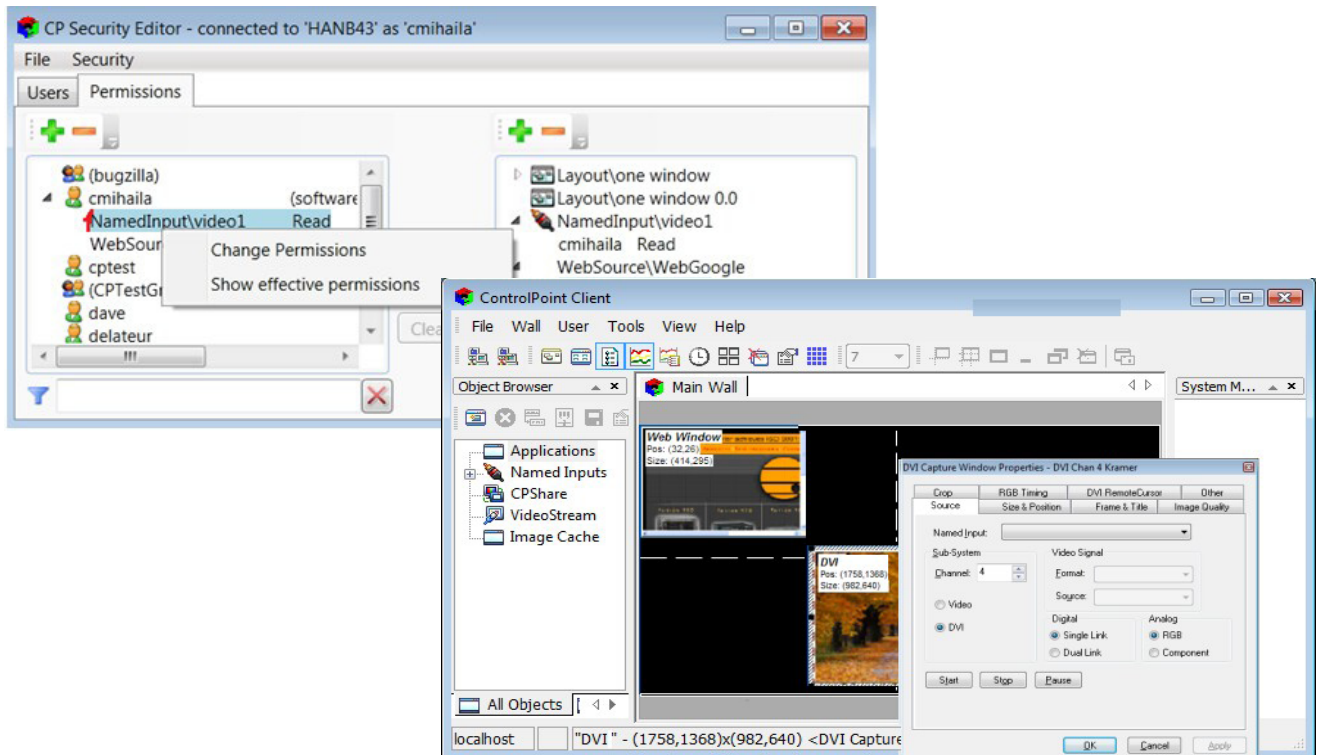
With security defined at the object level, managers can create discrete management and access permissions for wall segments, layouts, inputs, applications, and remote cursor control. For example, a system administrator can restrict a user to control over any rectangular region of the display wall based on login credentials.

User activity and event logging is performed at sub-second resolution, allowing thorough forensic analysis. Retention and roll-over policies are fully configurable.

System administrators can select from two available authentication schemes in ControlPoint: Windows Authentication or Simple Authentication.

ControlPoint Security's Windows Authentication option features automatic ControlPoint Server discovery in an Active Directory environment. Using NTLM or Kerberos to authenticate users with Active Directory or local NT accounts, secure login is accomplished using the standard user name and password controlled by the customer's IT department. Windows Single Sign-On (SSO) is supported. Security at the group level provides the system administrator with easier and more flexible security and access administration.

In environments without network access to a Windows Active Directory Server, Simple Authentication can be employed. Simple Authentication employs a user name-only database in ControlPoint Server to identify users. This method allows for easy integration with touch panels and programming scripts.



Jupiter Systems
31015 Huntwood Avenue
Hayward, California
94544-7007 USA

+1 510 675 1000 tel
+1 510 675 1001 fax
www.jupiter.com

Jupiter Systems and the Jupiter logo are registered trademarks of Jupiter Systems. ControlPoint, ControlPoint Security, Fusion Catalyst, and VizionPlus II are trademarks of Jupiter Systems. All other trademarks belong to their respective owners. Specifications are subject to change without notice.

Copyright ©2012 Jupiter Systems.

REV.201-201